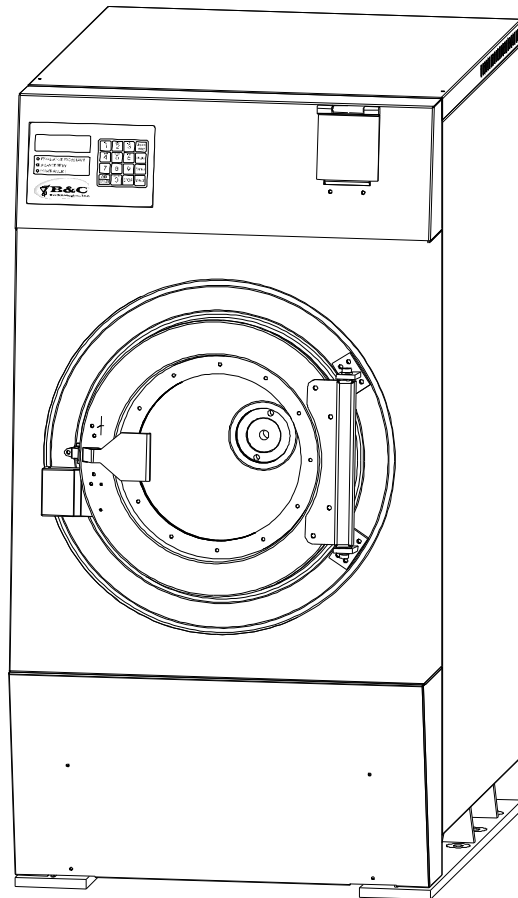


Washer-Extractor

HP Series Parts Manual



B&C Technologies

Panama City, FL

(850) 249-2222

(850) 249-2226 FAX

www.bandctech.com

Accurate Technologies

Samutprakarn, Thailand

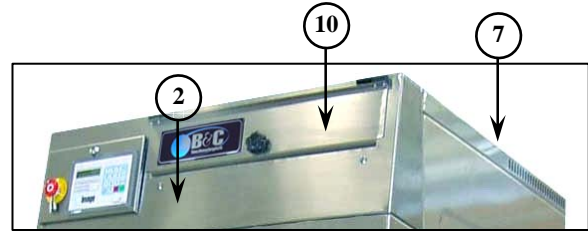
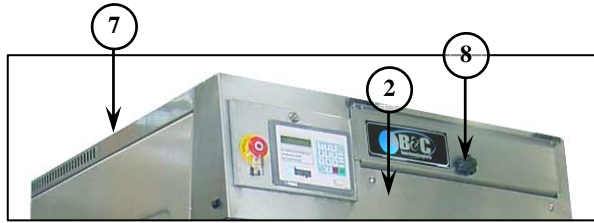
+66 (0) 2740-5511

+66 (0) 2740-5522 FAX

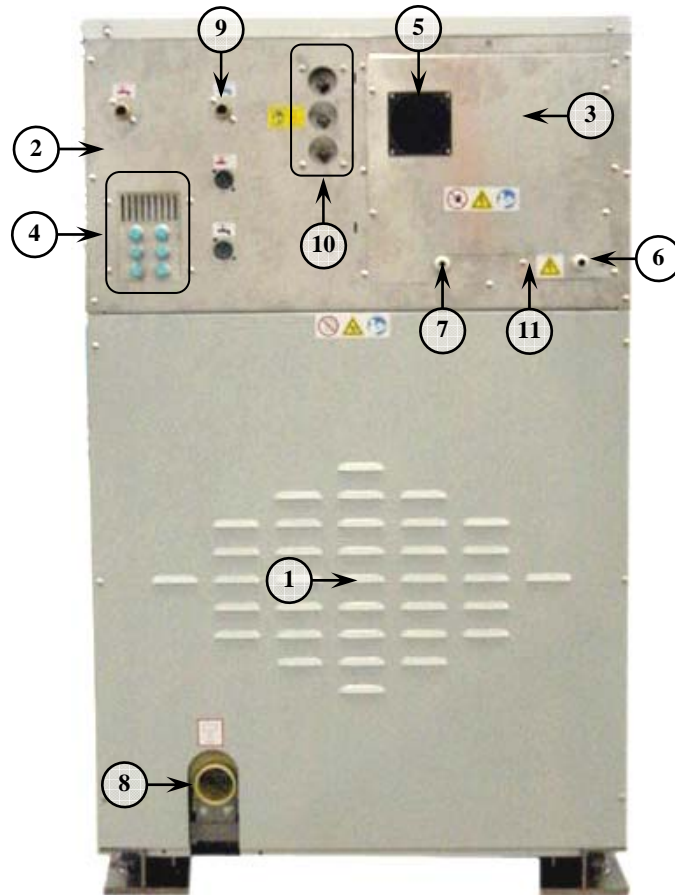
www.accuratethai.com

Revision1.0

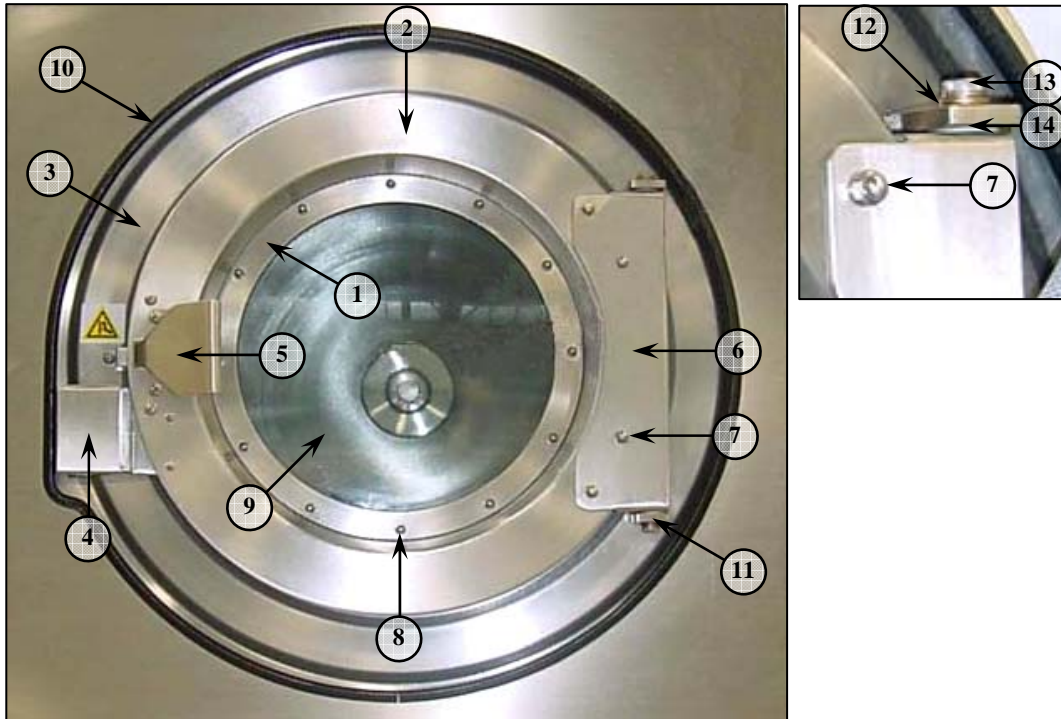
3-SEPT-2008



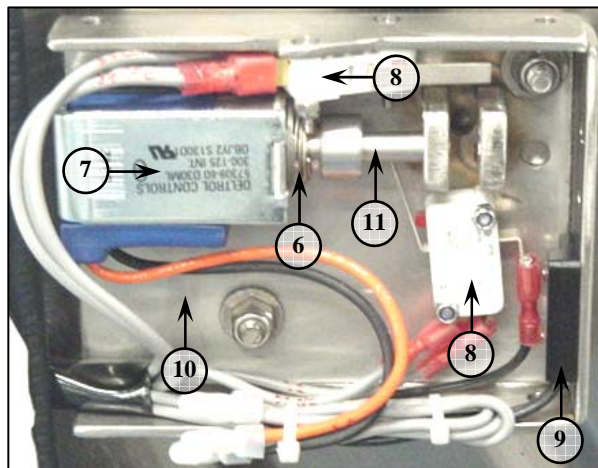
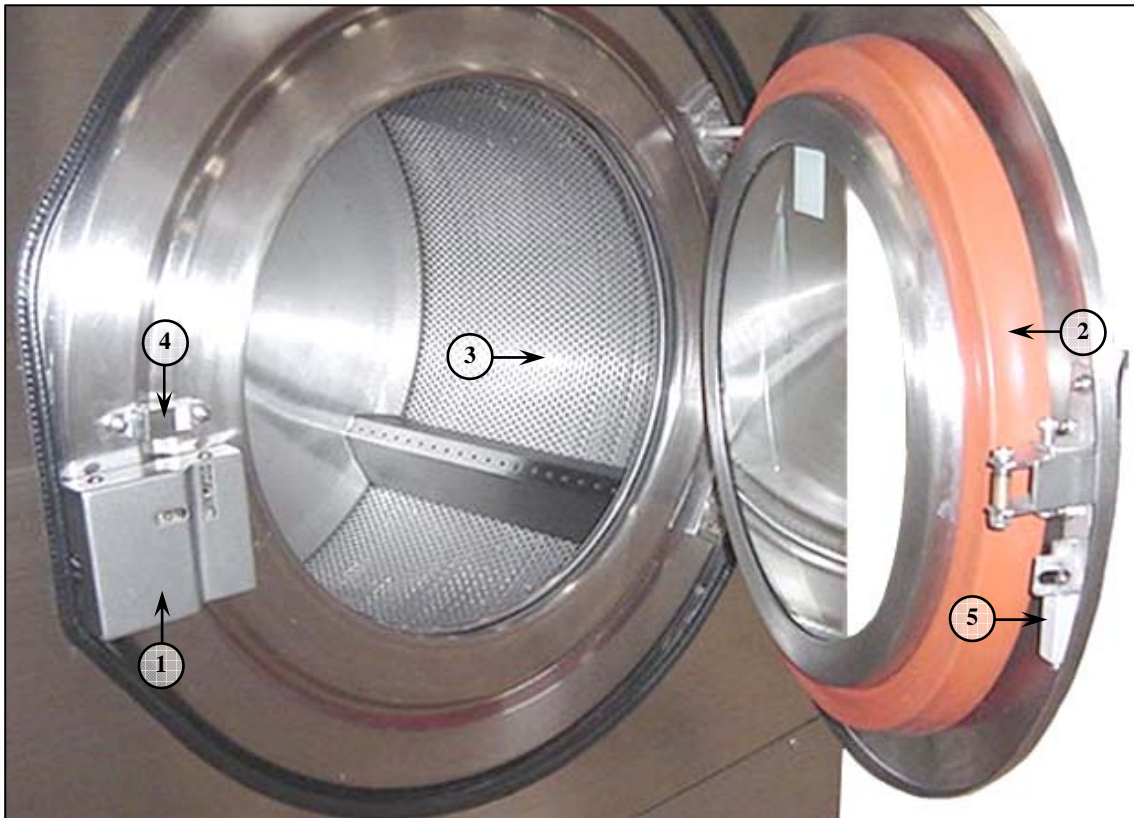
Item	Part No.	Qty.	Description
1	A1-S603-024	1	Base machine
2	A1-S603-033-01	1	Panel, Front top for 5 compartment dispenser (SUS)
	A1-S603-001-01	1	Panel, Front top for 1 compartment dispenser (SUS)
	A1-S603-047	1	Panel, Front top for 5 compartment dispenser (Plastic)
	A1-S603-048	1	Panel, Front top for 1 compartment dispenser (Plastic)
3	A1-S603-002	1	Panel, Front middle
4	A1-S603-003	1	Panel, Front lower
5	A1-S603-004-01	1	Right panel assembly
6	A1-S603-005-01		Left panel assembly
7	A1-S603-025	1	Top panel assembly
8	A0-A086-003	1	Plastic knob screw
9	A0-A068-013	-	Screw stainless
10	A1-S603-032	1	Lid, Chemical dispenser 5 Cup (SUS)
	A1-S603-020	1	Lid, Chemical dispenser 1 Cup (SUS)
	A0-A095-063-02	1	Lid, Chemical dispenser 5 Cup (Plastic)
	A0-A095-061-02	1	Lid, Chemical dispenser 1 Cup (Plastic)



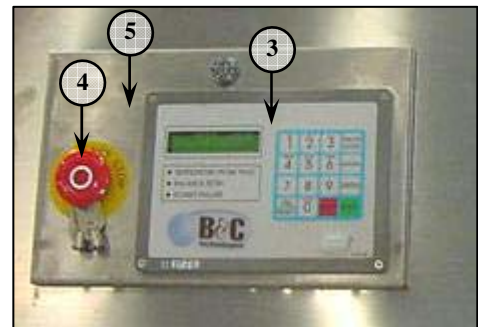
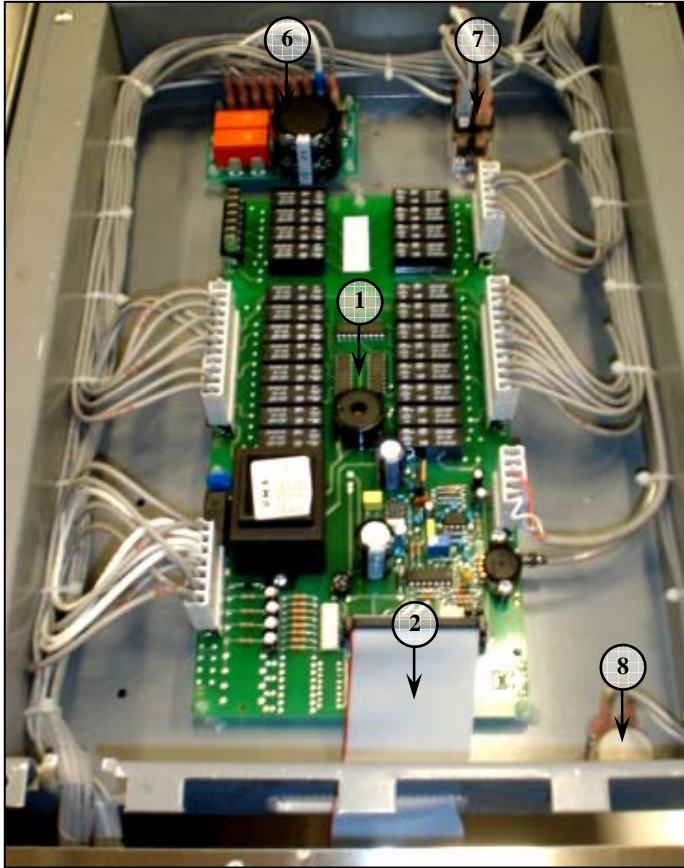
Item	Part No.	Qty.	Description
1	A1-S603-008-01	1	Rear panel assembly
2	A1-S603-007	1	Rear panel assembly, Top
3	A1-S603-013	1	Service panel assembly
4	A0-A105-011	6	Plug PVC.
5	A0-E012-006	1	Fan, Cooling
	A0-E012-009	1	Filter for fan
6	A0-A028-002	1	Electrical connection (Main power)
7	A0-A028-002	1	Electrical connection (Chemical)
8	A0-E041-002	1	Drain valve
9	A1-SSP2-001	2	Pipe, water inlet
10	A0-A024-002	3	Grease fitting
11	A1-ST01-001	1	Electric service mounting plate (Steam, Hot water Model)
	A1-ST01-002	1	Electric service mounting plate (Electric Model)



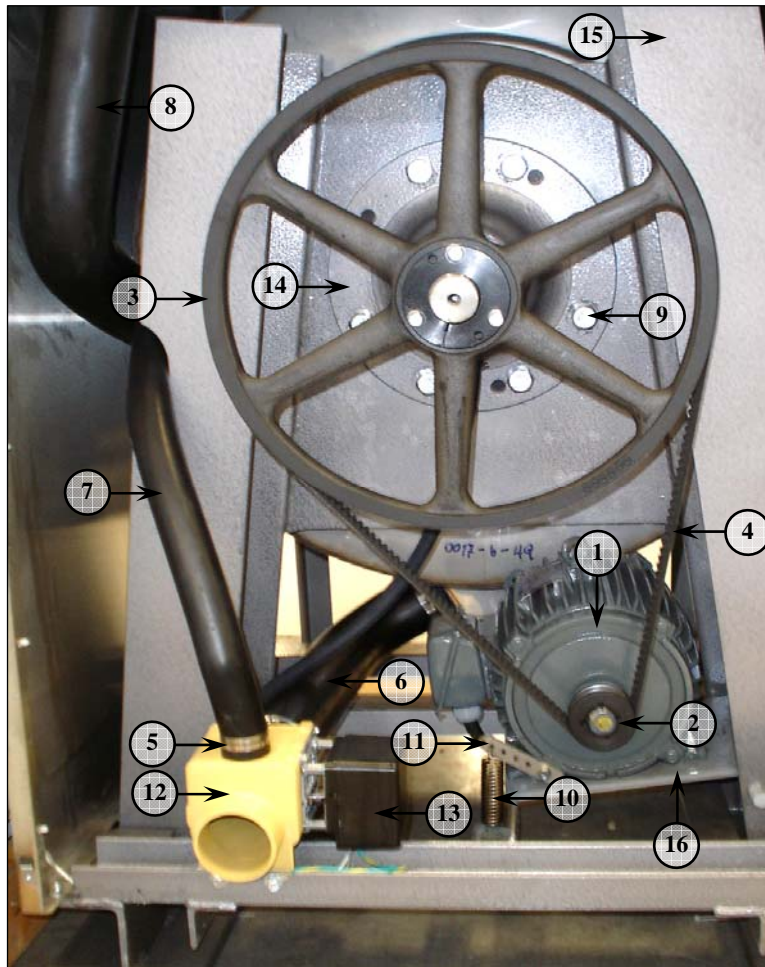
Item	Part No.	Qty.	Description
	HP 60		
1	A1-S603-010	1	Glass retainer ring
	A0-A001-041	1	Gasket, Door glass
2	A1-S603-011	1	Door tub
3	A1-S603-012	1	Front panel tub
4	A1-ST00-002	1	Door lock assembly complete set
5	A1-ST00-001	1	Assembly Door Handle and Brackets complete set
6	A1-S603-015	1	Door hinge
7	A0-A081-066	4	Cap nut
	A0-A057-003	4	Bolt studs stainless
8	A0-A057-002	12	Bolt studs stainless
	A0-A081-005	12	Cap Hex. nut
9	A0-A003-005	1	Door glass
10	A0-A001-004	1	Rim protection gasket
11	A1-S603-029	1	Door hinge bracket
12	A0-A033-002	1	Door hinge bushing
13	A0-A033-003	1	Bolt, Shoulder, Door Hinge
14	A1-S603-030	1	Door hinge washer



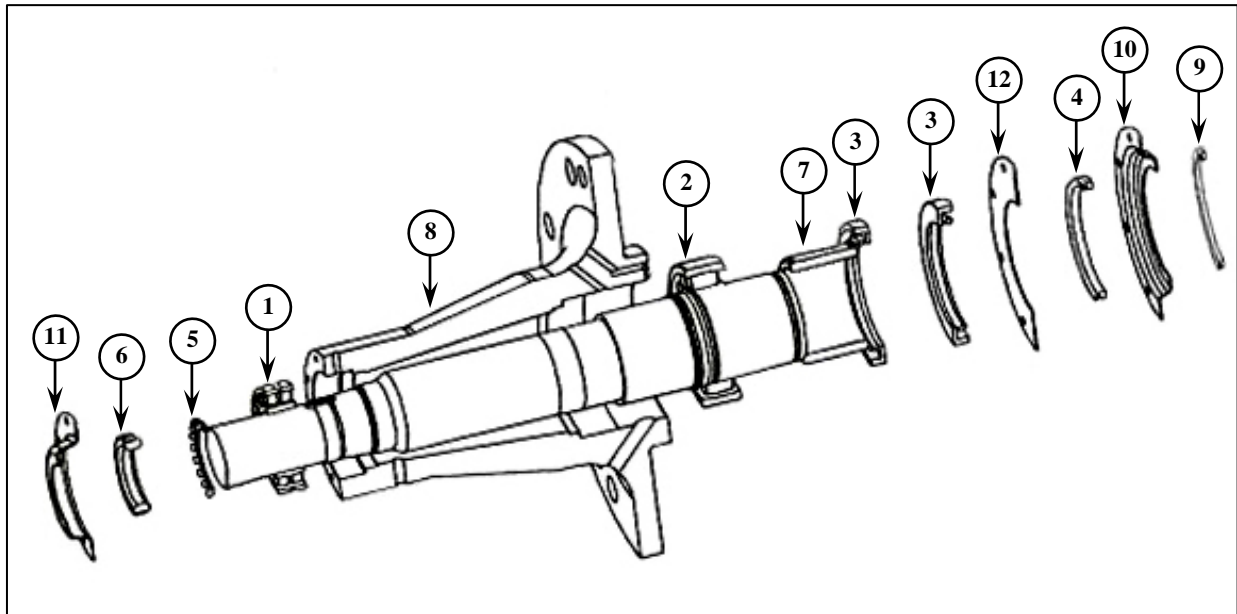
Item	Part No.	Qty.	Description
1	A1-ST00-002	1	Door lock assembly complete set
	A1-ST00-002-02	1	Door lock cover
2	A0-A001-012	1	Door Gasket
3	A1-S601-018	1	Basket stainless steel
4	A0-A013-009	1	Door lock block
5	A0-A036-001	1	Magnet actuator for magnetic reed Switch (White)
6	A0-A008-120	1	Spring, Solenoid lock
7	A0-E015-024	1	Solenoid door lock (for DC)
8	A0-E014-004	2	Micro switch
9	A0-E014-007	2	Switch, Magnet reed
10	A1-ST00-002-01	1	Base box with Guides
11	A1-ST00-002-03	1	Locking Pin, Head. (for DC)



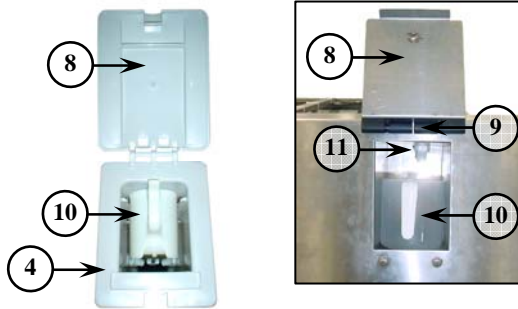
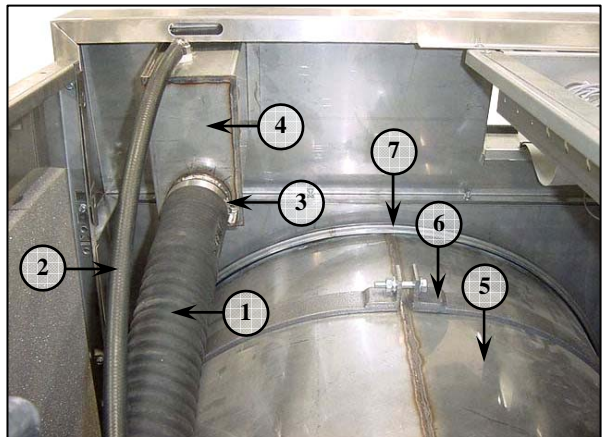
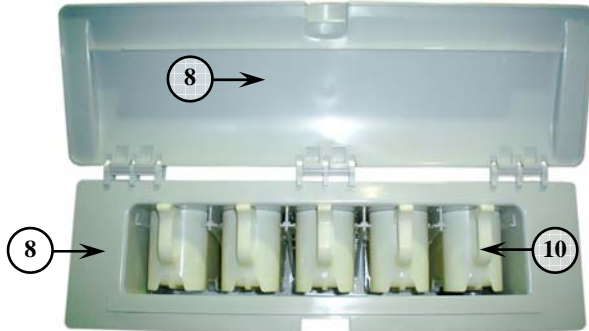
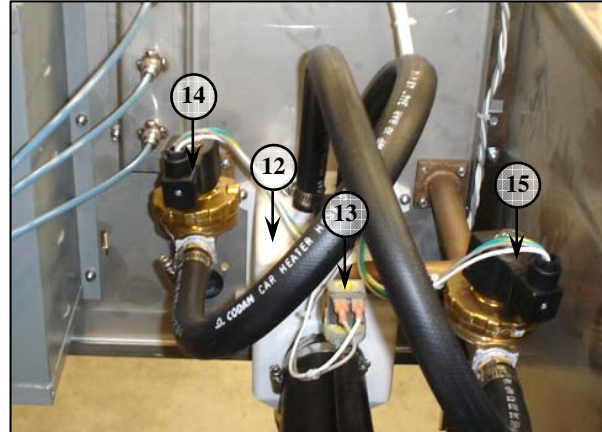
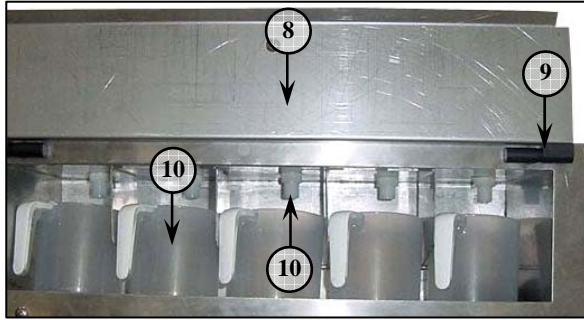
Item	Part No.	Qty.	Description
1	A0-E007-003	1	Output board
2	A0-E007-002	1	Ribbon Cable
3	A0-E007-001	1	Microprocessor unit
4	A0-E032-022	1	Emergency stop button (Head)
	A0-E032-023	1	Emergency stop contactor base
	A0-E032-024	1	Emergency stop contactor
5	A1-S603-034	1	Face panel
6	A0-E015-026	1	Board PCB, Door lock
7	A0-E009-017	1	Relay
8	A0-E015-015	1	Vibration switch



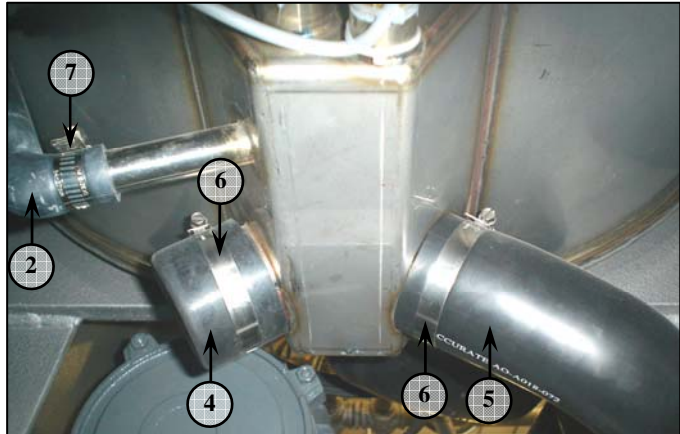
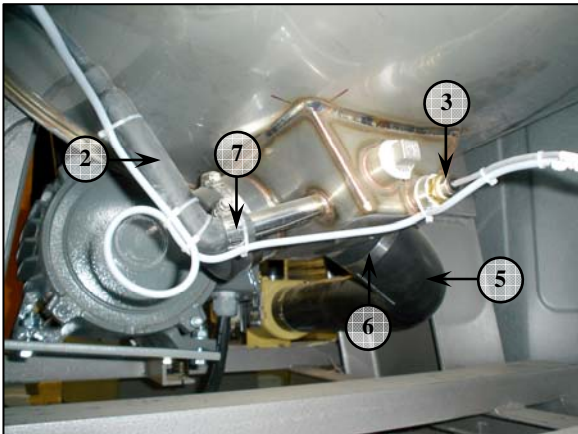
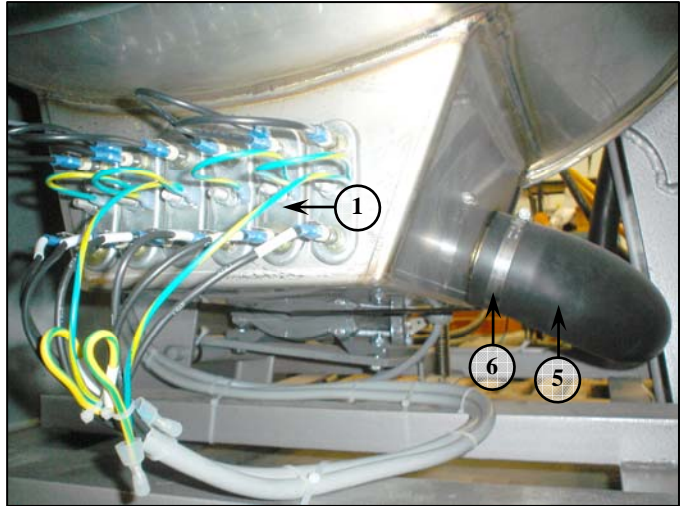
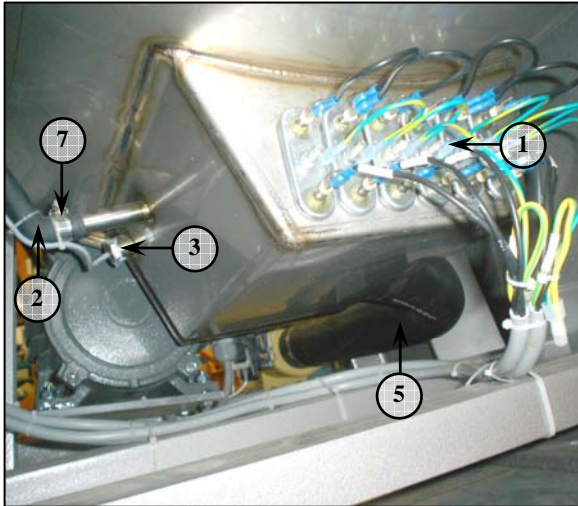
Item	Part No.	Qty.	Description
1	A0-E008-213	1	Motor "TECO" 50Hz.
	A0-E008-221	1	Motor "TECO" 60Hz.
2	A0-M008-118	1	Motor pulley
	A0-M009-084	1	Motor pulley bushing
	A0-M009-191	1	Motor pulley bushing taper
	A0-A079-030	3	Hex. bolt
3	A0-M008-117	1	Basket pulley
	A0-M009-080	1	Basket pulley bushing
4	A0-A002-037	2	V- Belt
5	A0-A052-011	6	Hose clamp
6	A0-A018-071	1	Drain hose
7	A0-A018-078	1	Overflow, Hose
8	A0-A018-068	1	Fill hose
9	A0-A074-852	1	Hex. Bolt
10	A0-TSA01-604	1	Spring tension
11	A1-SHE1-011	1	Tension spring mounting plate
12	A0-E041-002	1	Drain valve assembly
13	A0-E041-250	1	Cover box and mounting drain valve motor
	A0-E041-020	1	Drain valve stator coil 24V
	A0-E041-011	1	Drain valve motor 24V
14	A0-A007-012	1	Housing bearing
15	A1-S603-044	1	Main frame
16	A1-S603-045	1	Motor support



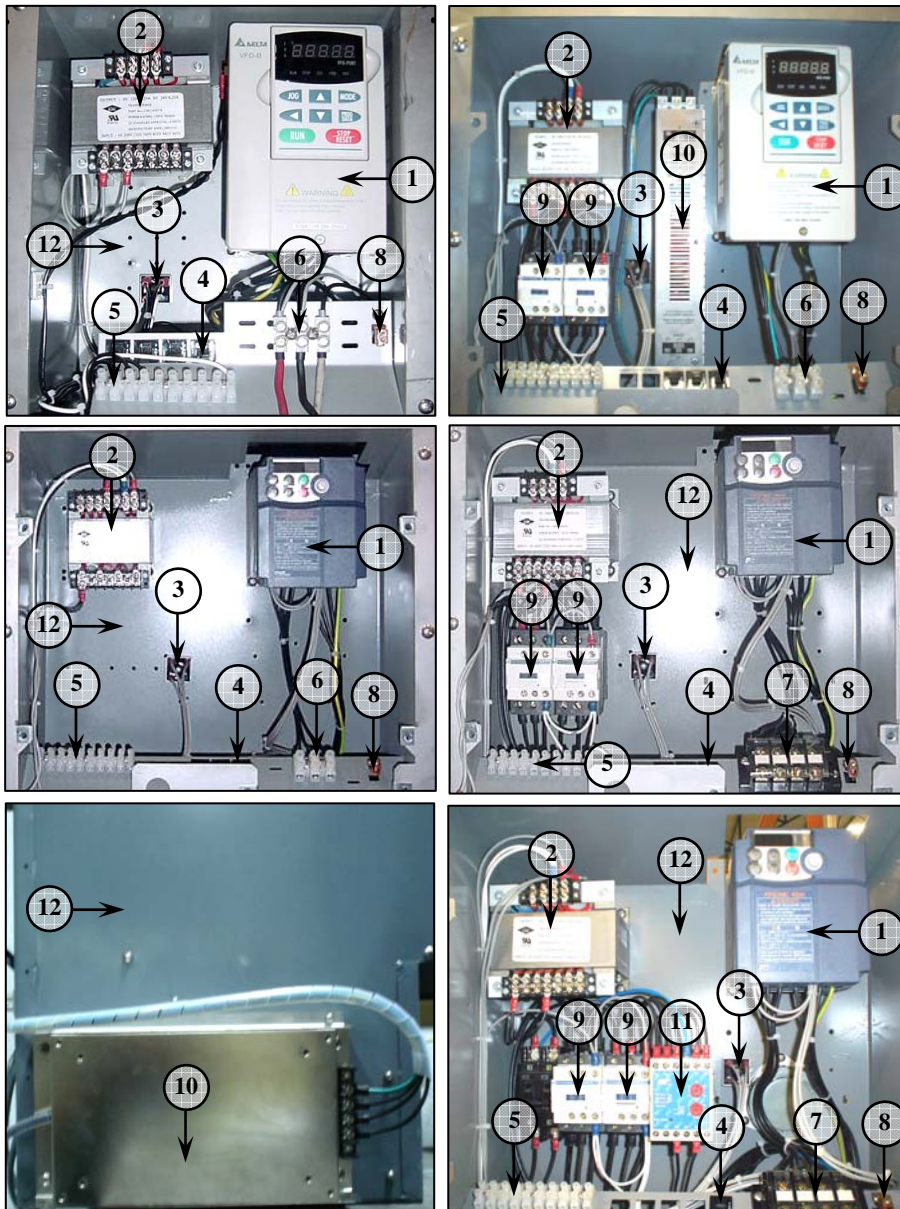
Item	Part No.	Qty.	Description
1	A0-A004-001	1	Ball bearing Rear (Outboard)
2	A0-A004-011	1	Ball bearing, Front (Inboard)
3	A0-A005-015	2	Seal
4	A0-A005-101	1	Seal, V-ring,
	A0-A005-103	1	Seal, V-ring
5	A0-A006-016	1	Nut, Bearing
6	A0-A006-017	1	Washer, Bearing
7	A0-A006-023	1	Shaft collar
8	A0-A007-012	1	Housing bearing
9	A0-A005-149	1	Seal, O-Ring
10	A1-S802-031	1	Seal plate, Front
11	A1-S802-035	1	Seal plate, Rear
12	A1-S802-036	1	Seal plate, Flat front



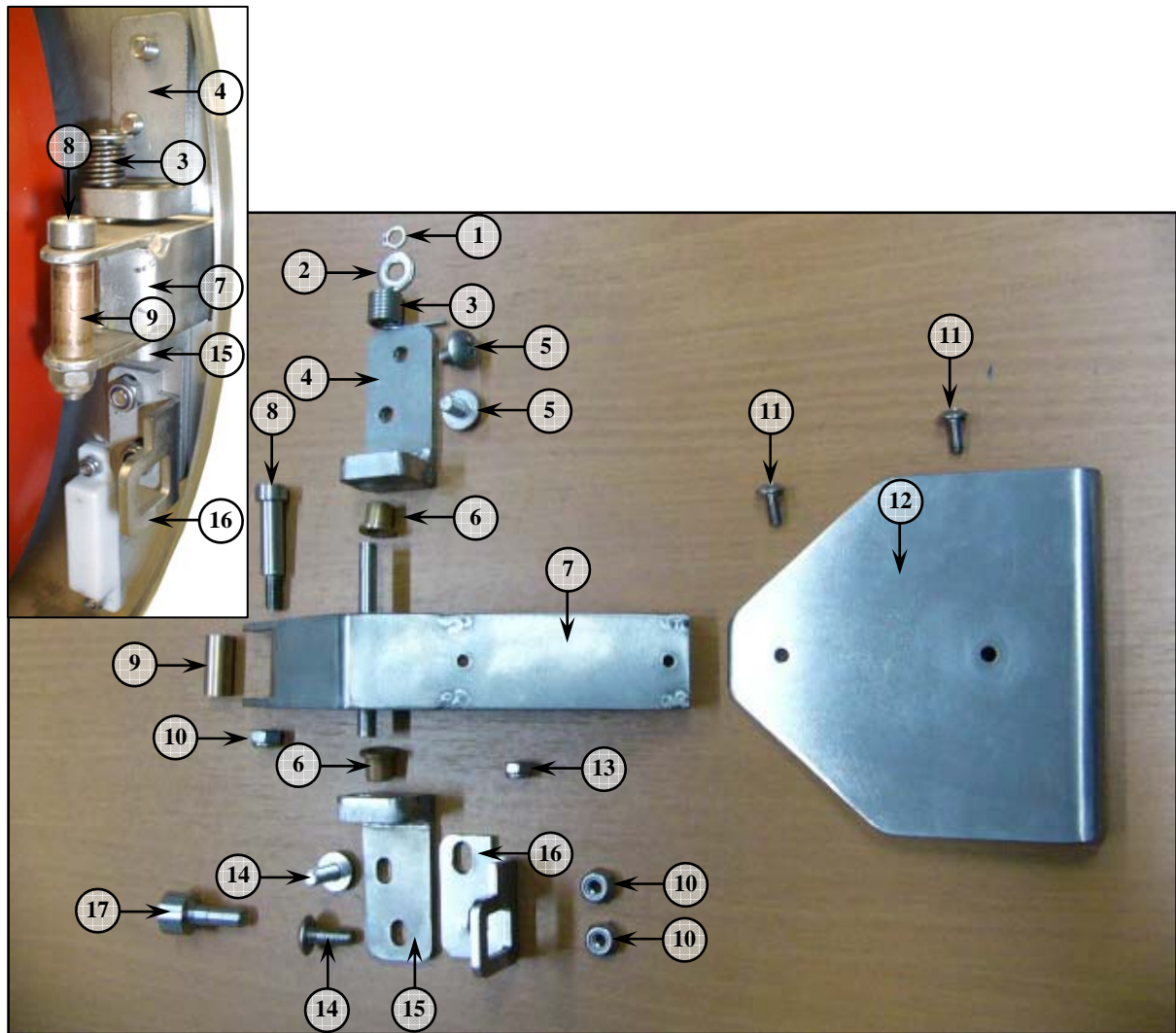
Item	Part No.	Qty.	Description
1	A0-A018-073	1	Detergent tube
2	A0-A018-016	1,5	Cold supply dispenser tube
3	A0-A052-004	2	Hose clamp
4	A1-S603-026	1	Body, Chemical dispenser 1 Cup (SUS)
	A1-S603-027	1	Body, Chemical dispenser 5 Cup (SUS)
	A0-A095-061-01	1	Body, Chemical dispenser 1 Cup (Plastic)
	A0-A095-063-01	1	Body, Chemical dispenser 5 Cup (Plastic)
5	A1-S603-021	1	Shell assembly
6	A1-S603-022	1	Shell ring
7	A1-S603-023	1	Shell assembly ring
	A0-A001-003	1	Gasket seal front panel to tank
8	A1-S603-020	1	Lid, Chemical dispenser 1 Cup (SUS)
	A1-S603-032	1	Lid, Chemical dispenser 5 Cup (SUS)
	A0-A095-061-02	1	Lid, Chemical dispenser 1 Cup (Plastic)
	A0-A095-063-02	1	Lid, Chemical dispenser 5 Cup (Plastic)
9	A0-A029-001	2	Plastic hinge
10	A0-A030-001	1,5	Plastic cups (SUS dispenser)
	A0-A030-006	1,5	Plastic cups (Plastic dispenser)
11	A0-A095-002	1,5	Nozzle, Adaptor
12	A0-A127-002	1	Vacuum breaker
13	A0-E040-002	2	Supply valve
14	A0-E040-012	1	Cold water solenoid valve
15	A0-E040-011	1	Hot water solenoid valve



Item	Part No.	Qty.	Description
	HP 60		
1	A0-E005-002	3,6	Heater (For type electrical)
2	A0-A018-090	1	Hose water level
3	A0-E007-007	1	Temperature probe
4	A0-A001-034	1	Reuse, Drain plug
5	A0-A018-071	1	Drain hose
6	A0-A052-006	2	Hose clamp
7	A0-A052-010	1	Hose clamp



Item	Part No.	Qty.	Description
	HP 60		
1	A0-E001-136	1	Inverter "Fuji" 230V.
	A0-E001-146	1	Inverter "Fuji" 430V.
	A0-E001-060	1	Inverter "Delta" 230V.
	A0-E001-077	1	Inverter "Delta" 460V.
2	A0-E006-029	1	Transformer
3	A0-E050-002	1	Bridge rectifier
4	A0-E010-031	2	Circuit breaker 1A
	A0-E010-034	1	Circuit breaker 3A
	-	1	Circuit breaker 6A
5	A0-E021-039	1	Block, Terminal
6	A0-E021-031/1	1	Block, Terminal (For Steam, Hot water)
7	A0-E021-002	1	Block, Terminal (For Electric heater)
8	A0-E055-001	1	Connector, Ground Lug
9	A0-E004-001	1,2,3	Magnetic Contactor
10	-	1	EMI-Filter (Optional for Steam and Hot water)
11	A0-E010-024	1	Phase protection (Option)
12	A1-ST01-006	1	Electric enclosure, Rear



Item	Part No.	Qty.	Description
-	A1-ST00-001	Kit	Assembly Door Handle and Brackets complete set
1	A0-TSJ01-215	1	External cir clip-6
2	A0-A083-003	1	Flat SUS Washer
3	A0-TSA01-496	1	Door Handle Pivot Spring
4	A1-ST00-001-01	1	Door Handle Upper hinge bracket-B
5	A0-A068-023	2	Truss head screw 6-10
6	A0-A033-016	2	Door handle hinge Bush,
7	A1-ST00-001-04	1	Door Handle- B body
8	A0-A033-005	1	Door Latch Shoulder Bolt
9	A0-A033-004	1	Door Handle latch Bush
10	A0-A071-015	3	Hexagon Nylock Nut-6
11	A0-A068-004	2	Truss head screw 4-10
12	A1-ST00-001-03	1	Door Handle-B Grip
13	A0-A071-004	1	Hexagon Nylock Nut-4
14	A0-A068-011	2	Truss head screw 6-15
15	A1-ST00-001-02	1	Door handle Lower hinge Bracket-B
16	A1-ST00-001-05	1	Door Lock Tongue (Square)
17	A0-A033-014	1	Recessed Lock Pin for (DC) Solenoid